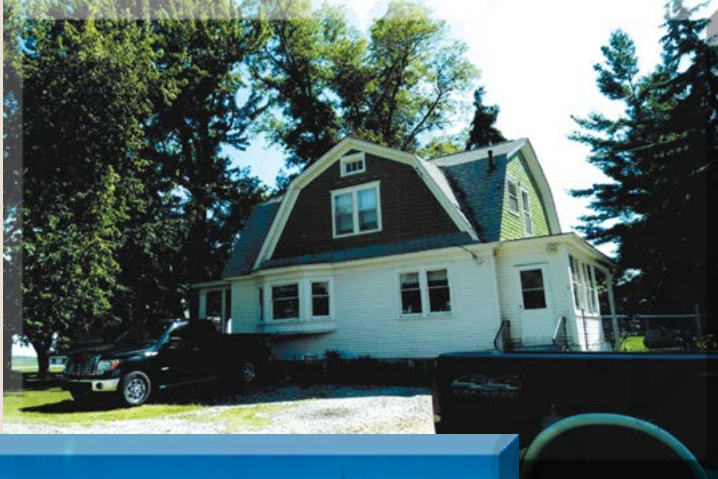


## CENTENNIAL FARMS SPOTLIGHT

# EDWARD & DELLA HANDLEY FARM

## MACON TOWNSHIP, MICHIGAN

### ESTABLISHED MARCH 1, 1912



On March 1, 1912, Edward C. Handley and his wife, Della, purchased 195 acres of land in the northeast corner of Lenawee County for the purpose of farming. The land came equipped with a farmhouse, garage, barn, and granary. Shortly after they acquired the farm, the Handley's began cultivating corn, soybeans, and hay. They also raised livestock on the farm, including cows, sheep, pigs, and chickens.

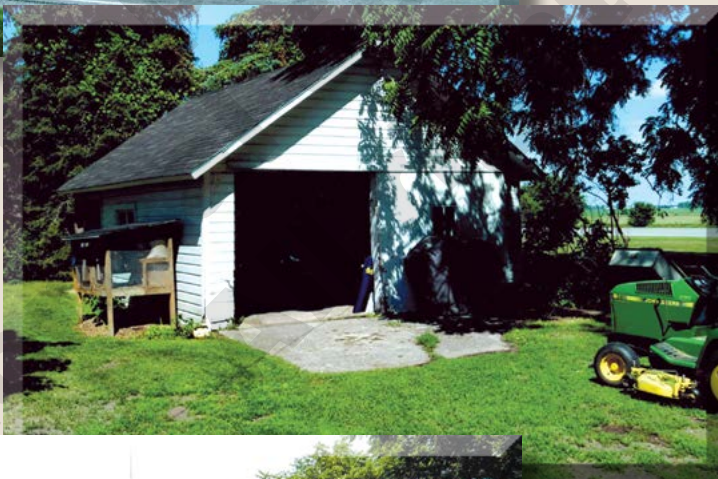
*Above: The house built in 1920.*

*Left: The barn also built in 1920.*

Tragedy struck the Handley Farm in 1920 when a powerful cyclone leveled both the farmhouse and the original barn. In the wake of the destruction, Edward and Della made due by adopting the granary as a temporary shelter while they rebuilt. Later that year, a new farmhouse was built and a new barn was raised. Those buildings remain on the farm to this day.

In 1934, the Handley farm added a second house for the couple's son, Edward G. Handley and his wife. That house was later converted into a garage, and so it remains at present.

In 1936, Edward C. Handley passed away, and the farm was later passed to his wife and son. Shortly after, another house was built next door to the 1920 farmhouse for Della to live in. Her son, Edward G., and his family moved into the original farmhouse. Following Della's passing, her house was sold and moved off the original property, and the original 195 acres of the original homestead were divided between Della's seven grandchildren.



*Above: The garage, which once served as a home, built in 1934.*

*Left: The granary built in 1912.*



Today, Eleanor (Handley) Price, Della's granddaughter, owns 52.73 acres of that land, including the farmhouse, barn, granary, and garage, which were part of the family's original homestead. The farm no longer fosters livestock, aside from horses that are kept on the farm. The farm still produces corn, soybeans, wheat, and hay, carrying on a family tradition that has lasted more than a century. ☒



*Left: The granary built in 1912.*

*Below: An aerial view from 1999.*



*This Centennial Farm designation is sponsored by*

**DTE Energy Foundation**



**our sale started  
in 1934**

**meijer**®